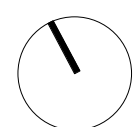


1 AXONOMETRIC
1 : 75

0 1 2 3 5 10m



**Australian
Unity**

SENIORS LIVING VILLAGE PROJECT
266 LONGUEVILLE RD
LANE COVE
NSW

© Copyright Thomson Adsett Pty Ltd.
ABN 76 105 314 654
Trading as ThomsonAdsett.

TA # 16.0161.12

Telephone +61 2 9003 9000
sydney@thomsonadsett.com
Suite 410, 50 Holt Street
Surry Hills
NSW 2010 Australia
thomsonadsett.com

**thomson
adsett**

PERSPECTIVES

As indicated @ A1

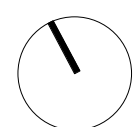
A301

21.09.2016

rev. A



0 1 2 3 5 10m



**Australian
Unity** 

SENIORS LIVING VILLAGE PROJECT
266 LONGUEVILLE RD
LANE COVE
NSW

© Copyright Thomson Adsett Pty Ltd.
ABN 76 105 314 654
Trading as ThomsonAdsett.

TA # 16.0161.12

Telephone +61 2 9003 9000
sydney@thomsonadsett.com
Suite 410, 50 Holt Street
Surry Hills
NSW 2010 Australia
thomsonadsett.com

**thomson
adsett**

PERSPECTIVES

@ A1

A302

21.09.2016

rev. G

- ▼ ROOF TOP LEVEL
65500
- ▼ BLD C ROOF
64800
- ▼ BLD C LEVEL7
61600
- ▼ BLD C LEVEL6
58400
- ▼ BLD C LEVEL5
55200
- ▼ LEVEL 4
52000
- ▼ LEVEL 3
48800
- ▼ LEVEL 2
45600
- ▼ LEVEL 1
42400



1 Northern Elevation
1 : 200

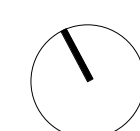


- ▼ BLD B ROOF
62800
- ▼ BLD B LEVEL 6
59200
- ▼ BLD B LEVEL 5
55600

- ▼ BLD C ROOF
64800
- ▼ BLD C LEVEL7
61600
- ▼ BLD C LEVEL6
58400
- ▼ BLD C LEVEL5
55200
- ▼ FLOOR LEVEL 4
52000
- ▼ FLOOR LEVEL 3
48800
- ▼ FLOOR LEVEL 2
45600
- ▼ FLOOR LEVEL 1
42400

2 Southern Elevation
1 : 200

0 1 2 3 5 10m



SENIORS LIVING VILLAGE PROJECT
266 LONGUEVILLE RD
LANE COVE
NSW

© Copyright Thomson Adsett Pty Ltd.
ABN 76 105 314 654
Trading as ThomsonAdsett.

TA # 16.0161.12

Telephone +61 2 9003 9000
sydney@thomsonadsett.com
Suite 410, 50 Holt Street
Surry Hills
NSW 2010 Australia
thomsonadsett.com

**thomson
adsett**

ELEVATIONS 1

As indicated @ A1

A303

21.09.2016

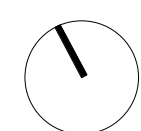
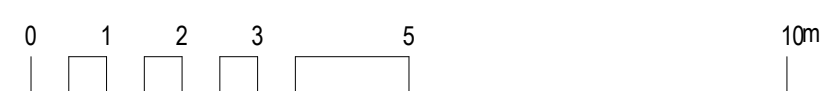
rev. G

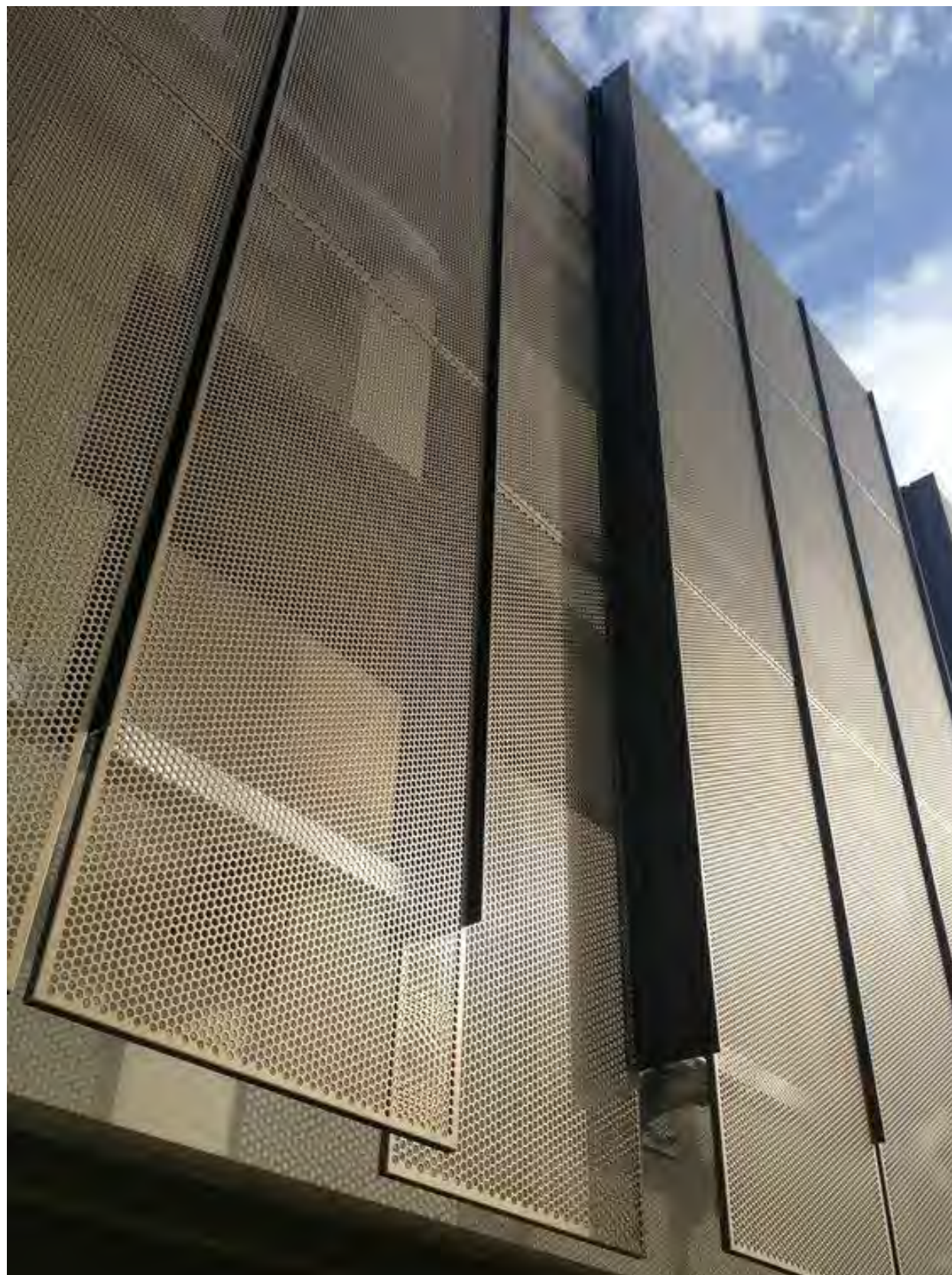
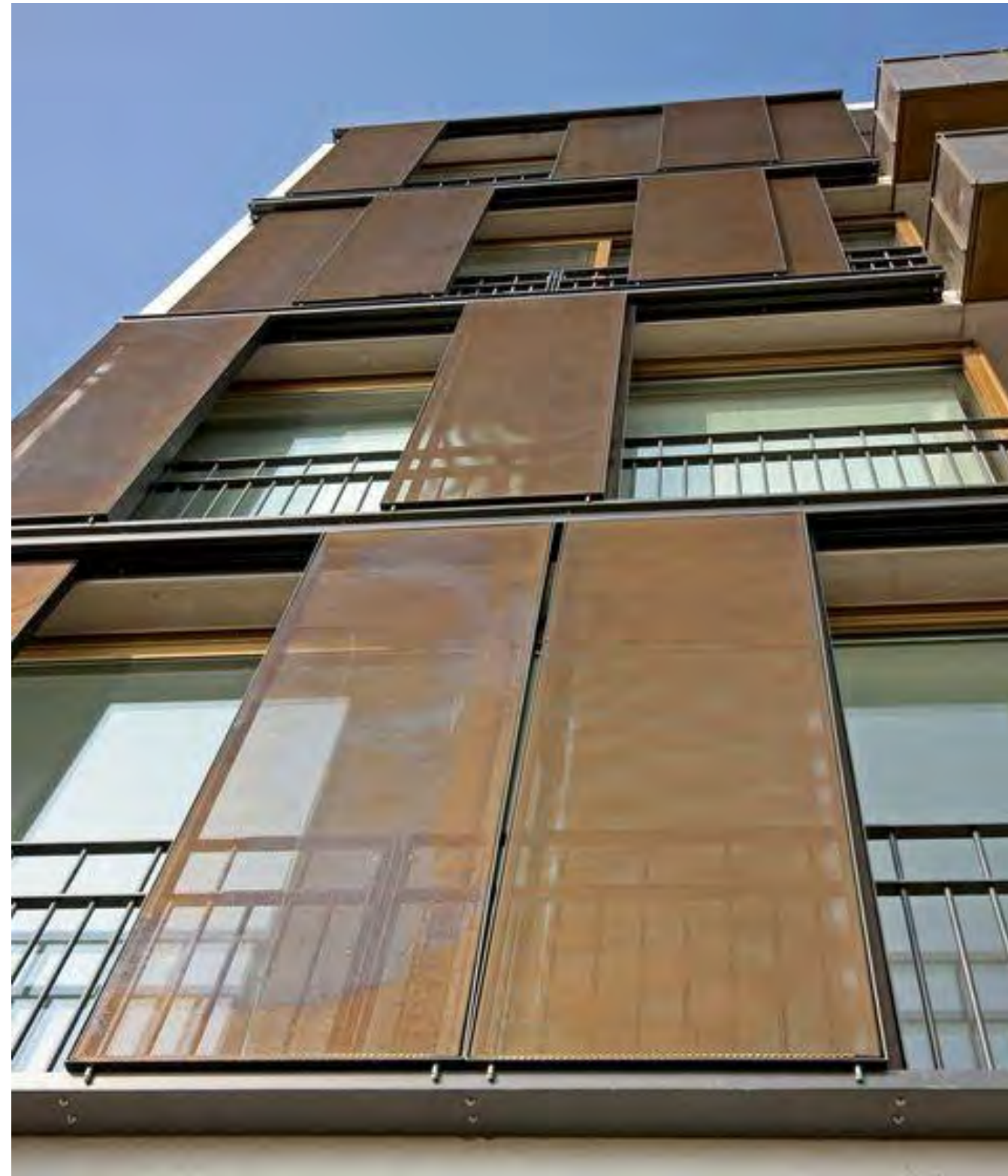


2 Western Elevation
1 : 200



1 Eastern Elevation
1 : 200





EXTERNAL PALETTE- MOOD BOARD

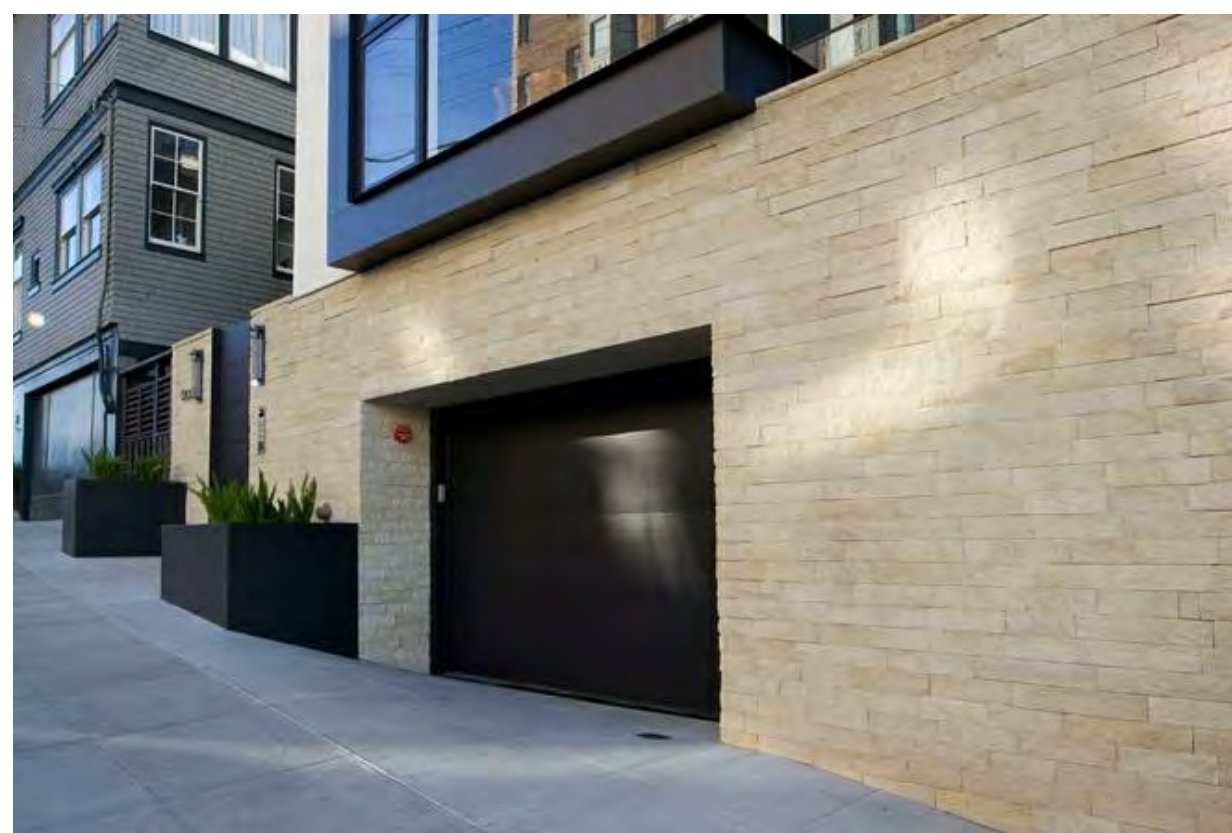
THE EXTERNAL MATERIALS WERE CHOSEN TO REDUCE THE VISUAL IMPACT ON THE LANDSCAPE; IN COLOURS THAT INTEGRATE WITH THE GREENERY FROM THE BUSHLAND AND SURROUNDINGS

THE BUILDING WOULD SIT ON A ROBUST SANDSTONE BASE, REMINISCE OF THE SANDSTONE ROCK FOUND ON SITE. ATOP A LIGHT BUILDING WITH GENEROUS BALCONIES AND PRIVATE OPEN SPACES OVERLOOKING GENEROUS COURTYARDS, CREATING A WARM AND HOMELY FEELING. THE ASSYMETRIC BALCONIES CREATE THE IDEA OF EXCLUSIVITY AS EVERY APARTMENT HAS A DIFFERENT CONFIGURATION OF PLAN AND BALCONY.

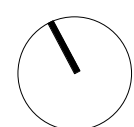
THE AGED CARE FLOORS HAVE A VIEWING DECK, ENCLOSED IN GLASS ALLOWING VIEWS OF THE SURROUNDING GREENERY AND THE FAR DISTANT CITY VIEWS.

THE METAL MESH, SEMICOVERED ROOF ELEMENTS CREATE A LAYER OF PRIVACY AND SUN PROTECTION WHILE ADDING INTERESTING LIGHT AND SHADOW PATTERNS.

IMAGES ON THIS SHEET ARE FOR INDICATIVE REFERENCES ONLY AND DO NOT REPRESENT ANY THOMSON ADSETT PROJECT



0 1 2 3 5 10m



Australian Unity

SENIORS LIVING VILLAGE PROJECT

266 LONGUEVILLE RD
LANE COVE
NSW

© Copyright Thomson Adsett Pty Ltd.
ABN 76 105 314 654
Trading as ThomsonAdsett.

TA # 16.0161.12

Telephone +61 2 9003 9000
sydney@thomsonadsett.com
Suite 410, 50 Holt Street
Surry Hills
NSW 2010 Australia
thomsonadsett.com

**thomson
adsett**

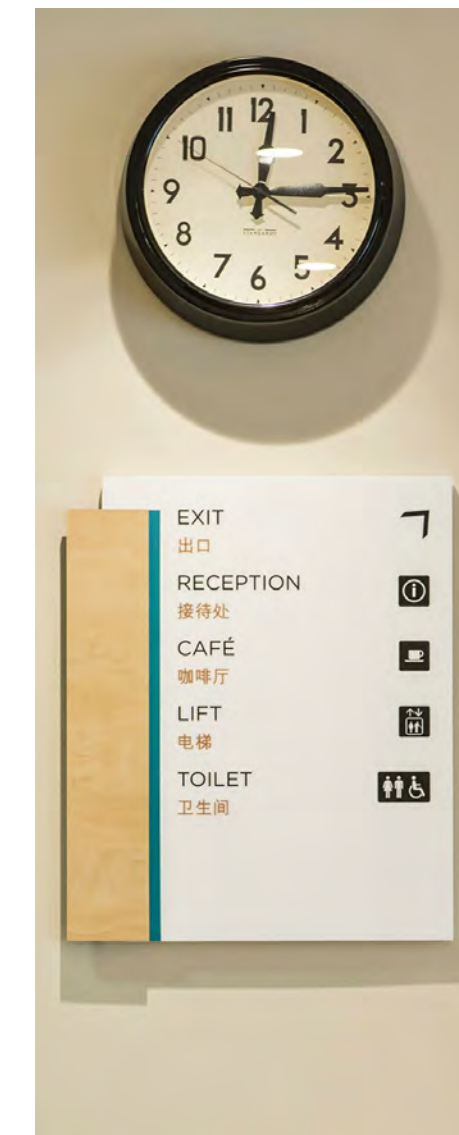
MOOD AND MATERIALS BOARD - EXTERIOR

1:1 @ A1

A350

21.09.2016

rev. A



INTERNAL PALETTE- MOOD BOARD

THE INTERIORS SHALL BE LUXURIOUS WITH CONTEMPORARY FINISHES, WHILST PROVIDING COZINESS MAKING THE APARTMENTS, AND RESIDENTIAL AGED CARE COMFORTABLE. THE SPACES SHALL HAVE FLEXIBILITY TO ALLOW FOR DIFFERENT FINISHES AND FURNITURE ACCORDING TO THE PREFERENCE OF THE RESIDENT

WAY FINDING IS PROPOSED TO BE DONE IN TWO OR MORE LANGUAGES TO EMBRACE THE DIFFERENT CULTURES OF LANE COVE RESIDENTS.

EACH SPACE IS DESIGNED TO PROVIDE A CALMING YET A RICH SENSORY EXPERIENCE TO THE RESIDENTS OF 266 LONGUEVILLE ROAD

